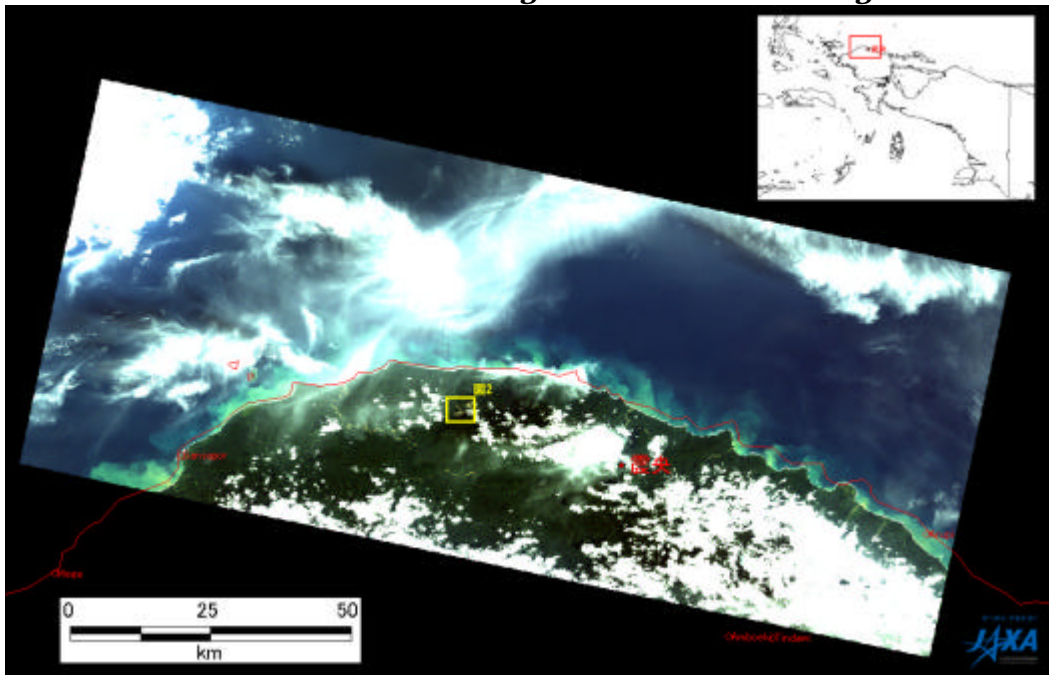


**Deteksi Perubahan
Sebelum dan Sesudah Gempabumi di Papua tanggal 4 Januari 2009**

***Change Detection
Before and After Earthquake in Papua on January 4, 2009***

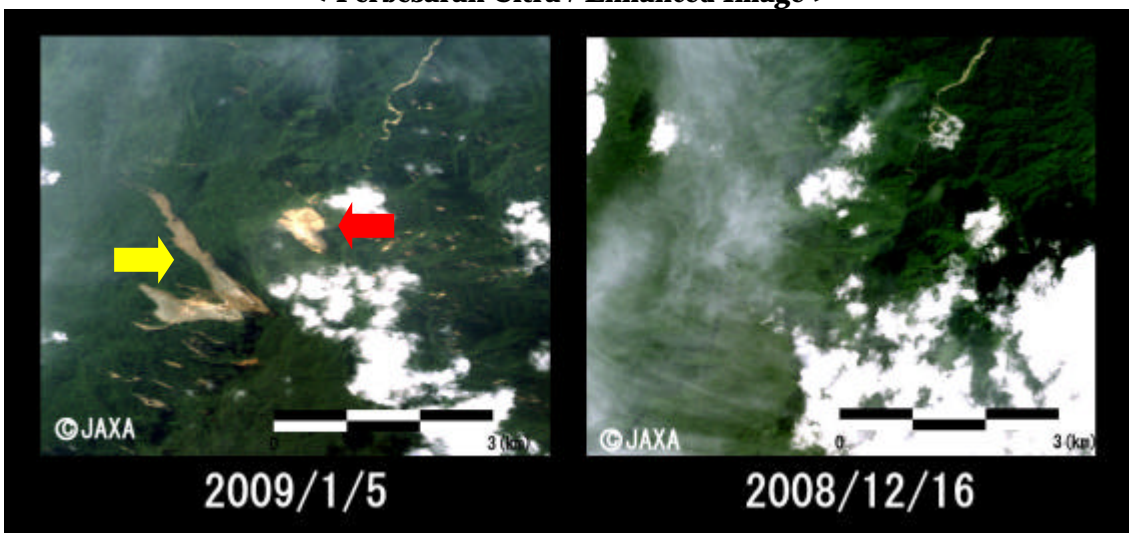
< Citra ALOS/AVNIR-2 / Original ALOS/AVNIR-2 Image >



JAXA merekam citra ALOS/AVNIR-2 tanggal 5 Januari 2009 di atas Provinsi Papua Barat yang mengalami kejadian gempabumi pada tanggal 4 Januari 2009.

JAXA obtained ALOS/AVNIR2 image over West Papua Province on January 5, 2009 which was affected from earthquake on January 4, 2009.

< Perbesaran Citra / Enhanced Image >



Hasil interpretasi JAXA/EORC dari citra sebelum (16 Desember 2008) dan sesudah gempabumi (5 Januari 2009) mengidentifikasi adanya perubahan tutupan lahan yang diakibatkan oleh kejadian longsor yang besar. Perubahan yang besar ditunjukkan oleh tanda panah warna kuning dan merah. Disamping itu, beberapa perubahan dengan skala yang lebih kecil juga teridentifikasi dalam citra.

As a result of interpretation by JAXA/EORC from images which obtained before and after earthquake above, it is possible to identify several land cover changes may caused by huge landslide. In particular, there are major changes indicated by "yellow and red arrows" and those changes were may caused by the landslide. In addition, another small changes are identified around the images as well.